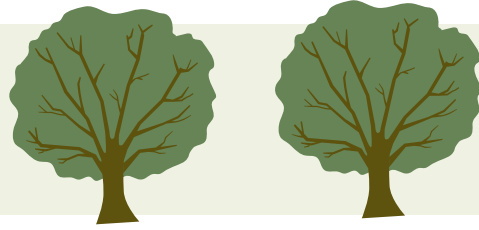


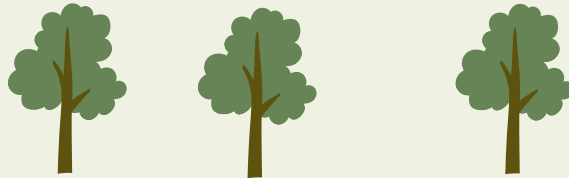


FLOURISHING IN THE Garden

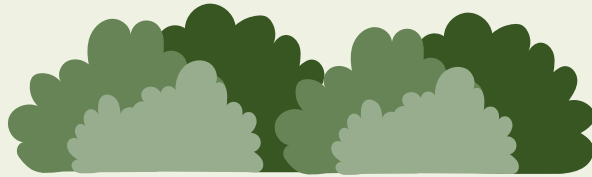
Overstory



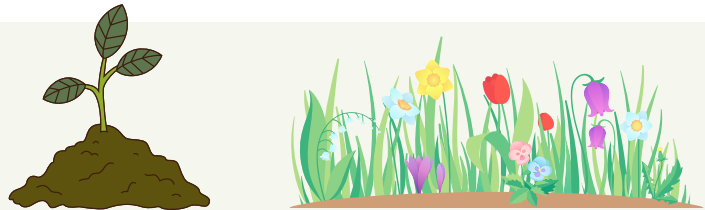
Understory



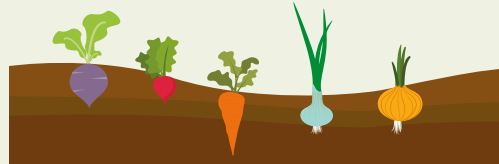
Shrub



Herbaceous



Root



Groundcover



Vine



Citations:

1. Daron. (2019, June 16). *Food Forest Layers and Why They Are Important*. Growing with Nature. <https://www.growingwithnature.org/food-forest-layers/>
2. *What is a Food Forest?* (n.d.). Project Food Forest. [https://projectfoodforest.org/what-is-a-food-forest/#:~:text=Generally%2C%20we%20recognize%20seven%20layers,%2C%20layer%20eight%20\(mushrooms\)..](https://projectfoodforest.org/what-is-a-food-forest/#:~:text=Generally%2C%20we%20recognize%20seven%20layers,%2C%20layer%20eight%20(mushrooms)..)

Content developed by Megan Pullin,
M.S. 500 RYT.

For educational purposes only.
Infographic created by Daryn Olsen.



Virginia Cooperative Extension is a partnership of Virginia Tech, Virginia State University, the U.S. Department of Agriculture, and local governments. Its programs and employment are open to all, regardless of age, color, disability, gender, gender identity, gender expression, national origin, political affiliation, race, religion, sexual orientation, genetic information, military status, or any other basis protected by law.

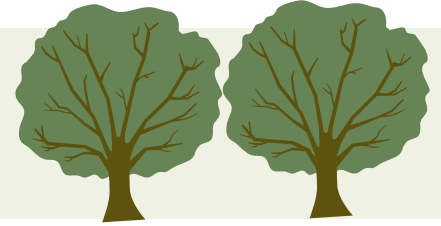




FLOURISHING IN THE Garden

Overstory

This layer includes larger trees and support trees that make the soil better.



Understory

This layer includes smaller trees.



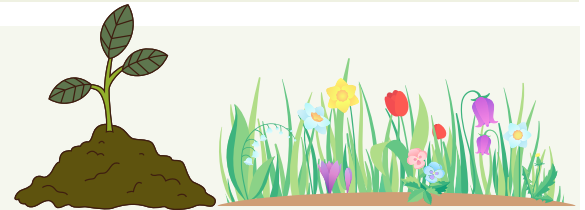
Shrub

This layer includes larger trees and support.



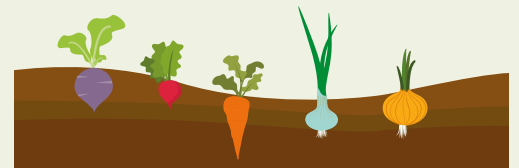
Herbaceous

This layer includes vegetables, flower, and nitrogen fixing plants.



Root

This layer includes plants like potatoes that grow mostly underground.



Groundcover

This layer includes plants that will fill in space on the ground and between plants.



Vine

This layer includes vines that will grow onto the woody plants.



Citations:

1. Daron. (2019, June 16). *Food Forest Layers and Why They Are Important*. Growing with Nature. <https://www.growingwithnature.org/food-forest-layers/>
2. *What is a Food Forest?* (n.d.). Project Food Forest. [https://projectfoodforest.org/what-is-a-food-forest/#:~:text=Generally%2C%20we%20recognize%20seven%20layers,%2C%20layer%20eight%20\(mushrooms\)..](https://projectfoodforest.org/what-is-a-food-forest/#:~:text=Generally%2C%20we%20recognize%20seven%20layers,%2C%20layer%20eight%20(mushrooms)..)

Content developed by Megan Pullin,
M.S. 500 RYT.

For educational purposes only.
Infographic created by Daryn Olsen.



Virginia Cooperative Extension is a partnership of Virginia Tech, Virginia State University, the U.S. Department of Agriculture, and local governments. Its programs and employment are open to all, regardless of age, color, disability, gender, gender identity, gender expression, national origin, political affiliation, race, religion, sexual orientation, genetic information, military status, or any other basis protected by law.

PHYSICAL ACTIVITY
RESEARCH
& COMMUNITY
IMPLEMENTATION
(PARCII) LAB

